

# Special Education School Committee Presentation

November 18, 2008



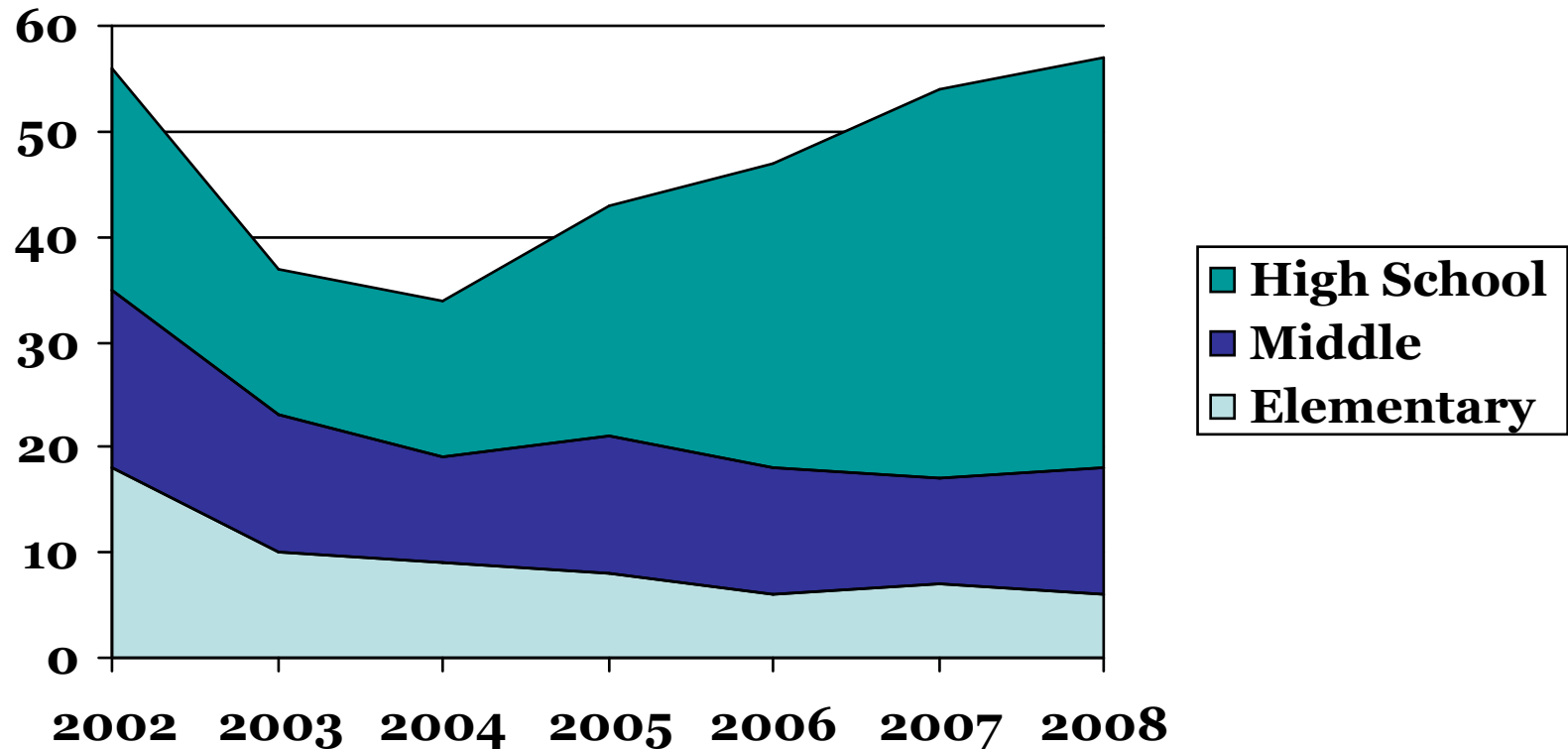
# Needham October 1st Enrollment Data

	2003	2004	2005	2006	2007	2008
Preschool (sped)	47	62	40	27	54	30
Elementary						
Middle School	149	129	153	151	162	154
High School						
Out of District	37	34	43	47	54	57
Total Sped Enrollment	540	556	569	563	627	670
<b>% of Needham School-Age Enrollment in Special Education</b>	<b>11.5%</b>	<b>11%</b>	<b>11.6%</b>	<b>11.2%</b>	<b>12.3%</b>	<b>13%</b>

# Disability Type as %age of Students with IEP's

Disability Type	Needham 06-07	Needham 07-08	<b>Needham 08-09</b>	MA 06-07
Specific Learning Disability	26.7	26.1	<b>28</b>	41.0
Communication Development Delay	19.6	20.8	<b>21</b>	15.9
Health	13.1	11.0	<b>9.3</b>	9.6
Autism	11.0	12.6	<b>14.5</b>	5.0
Emotional	8.5	10.6	<b>11.8</b>	4.0
Neurological	9.1	7.5	<b>6.2</b>	8.5
Other	7.7	7.4	<b>7.5</b>	3.2
	4.3	4.0	<b>1.7</b>	12.8

# Needham Out-of-District Trends



# MAJOR CAUSES OF INCREASED SP. ED. COSTS

- Advances in medical technology - resulting in medically fragile and at-risk newborns
- Consequences of a higher percentage of children living in poverty
- Increase in families experiencing social and economic stress.
- Rise in autism.

# Special Education Program Parent Survey Results

April, 2008

- Survey sent to 675 families, Preschool-Grade 12
- 26% return rate - 175 parent responses
- 9 in 10 parents (92%) indicated a positive level of satisfaction with their child's special education services



## Responsiveness

% Satisfied 94.5

## Communication

% Satisfied 86.4


## Compliance

% Satisfied 90.5





## % Satisfied with Special Education Services

- Specialized Instruction 93.6
  - Speech and Language 88.0
  - Occupational Therapy 84.7
  - Preschool 92.3
  - Counseling 71.6
- 

## 3 items for further focus

- 19% of parents would like more help in understanding how to support their child's program at home
- 18% indicated they would like more information on their child's progress
- 28% indicated they were not satisfied with counseling services

# Needham Rejected IEP Data


- 2006-7
- 74 Rejected IEP's out of 1093 IEP's (6.8%)
- 2007-8
- 43 Rejected IEP's representing 36 different students

# How did we resolve 2007-8 Rejected IEP's?

- 36 Resolved through local mediation
- 4 Formal Mediations with DESE
- 3 Still pending



# Preschool Program Grows

- Full time Preschool Coordinator
  - Supervision of program and staff
  - Program development
  - Parent support and communication
  - Lunch Bunch option for children
- 

# Preschool and Elementary Extended School Year Services

- 45 Preschool/Elementary intensive programs
- Expanded Social Detectives Camp served 12 students w/significant communication and social disabilities
- Supported participation in Explorations Program
- Tutoring and drop-in speech, occupational and physical therapies

# Pollard Addresses Student Needs

- MCAS task force developing instructional interventions, and programmatic supports for struggling students
- Strategies Class and Project Based Learning Activities address a wide range of instructional needs:
  - Social pragmatic, organizational, vocabulary, social, self-awareness, communication and academic skills

# Needham High School

- Connections Academic Program in 3rd year
- Connections Transitions Program provided re-entry for 39 students in 2006-7 and 52 students in 2007-8
- Co-taught grade 9 LD Program this year
- STRIVE expands to provide post-graduate programming for 18-22 year olds
  - Community jobs
  - ICE (Intensive Concurrent Enrollment) at Mass Bay Community College this spring

# Needham SEPAC

Special Education Parent Advisory  
Committee



# Who We Are

- The purpose of the Needham SEPAC is to advise the school district on matters that pertain to the education and safety of students with disabilities.
- Mass. Law requires each school district to have a PAC that meets regularly with school officials, participates in the planning, development and evaluation of the district's special education programs.
- We work for the understanding of, respect for and support of, all children with special needs and their parents in the community.

# How do we accomplish this?

- Network with parents (currently have 210 members on our distribution list)
- Monthly meetings with SPED Administrators
- Monthly newsletter, Listserve
- Provide informational forums
- Promote communications and programs within the community to encourage understanding, acceptance, and inclusion of children with special needs.
- Communicate with local, state, and national organizations that support children with special needs.

# PAC Initiatives

- School Liaisons
- For the first time this year, each school has at least one parent representative to speak on behalf of SEPAC at PTC meetings and serve as a resource for other parents.



# Web Page



- Thanks to a parent volunteer, we now have our own website -- launched in October, 2008.
- Please visit us on the web at:  
[www.needhamsepac.org](http://www.needhamsepac.org)

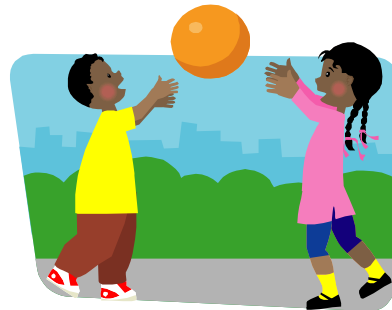
# Disability Awareness Programs

- Parents have developed PTC programs at Hillside, Eliot and a partial program at Mitchell.
- We are working with parent volunteers to possibly expand to the other schools.



# Focus Areas


- Social Skills



- This is the number one concern among parents in Needham. We'd like to see a district-wide program with a defined curriculum for special needs students who qualify in this area.



# Parent-School Communication

- Involve parents as experts on their child
  - Consult with parents to ensure home carryover
  - Share information in a timely manner (such as who their child's SLP, PT, OT, guidance counselor, special educator, aide ).
- 



# Principal/PAC Relationship

- Over the next year we plan to have liaisons build relationships with principals at their individual schools to discuss SEPAC and its initiatives.



# Focus Areas

- **Progress Reports**



- Parents would like to see reports more data driven and consistent in addressing the student's objectives and goals.

# Focus Areas

- **MCAS Support**



- Concerns raised by Middle School re: low special education scores and the plan to address this issue.
- Concerns raised by parents regarding MCAS preparation for at-risk special education students.

# Thank You!

- We appreciate being given the funds to join the Massachusetts Parents Action Committee (MASSPAC) for the first time this year.
- We look forward to using this resource to forward valuable information to our parent members.

